

OUTLINE

Endocrine and Metabolic Problems

- Pituitary disorders
- Hypoglycemia
- Free radicals — Essential in health, deadly in disease
- Diabetic ketoacidosis
- Apoptosis
- Adrenal gland dysfunction
- Addison's disease
- Jaundice
- Implications of hormones
- Thyroid disorders - Mechanism of onset affects treatment

Cardiovascular and Renal Problems

- Starling's Law - Normal capillary flow
- Heart failure
- Relationship between cardiac diseases and hypertension
- Unraveling hypertension
- Current concept on cardiogenic shock
- Atherosclerosis - The role of inflammation
- Anaphylaxis
- Acid-base disorders

Respiratory Problems

- Chronic obstructive pulmonary disease exacerbations
- Obstructive lung diseases affecting the mechanics of lung ventilation
- Sudden death in asthma
- Acute lung failure/ARDS
- Arterial blood gases - Made simple

Shock

- Common mechanisms of all types of shock
- The cardinal role of mediators in shock
- Newer therapies based on current pathophysiological understanding
- End points of resuscitation
- What type of shock is this?

The Immune System

- Inflammation - Acute phase response
- Systemic inflammatory response
- Infection – Part of a bigger picture
- Multiple organ dysfunction syndrome
- Stress reaction
- Autoimmune diseases

OBJECTIVES

1. Using clinical examples, explain the statement: "Virtually all human disease is 'autoimmune' in nature."
2. Outline an effective method to review options in pharmacologic therapy for any condition.
3. Identify the self-destructive spiral of progressive chronic heart failure.
4. Explain how the following drugs may abort or reverse the self-destructive spiral of heart failure: beta-blockers, angiotensin converting enzyme (ACE) blockers, angiotensin-receptor blockers (ARBs), aldosterone blockers, synthetic natriuretic proteins.
5. Describe why the statin drugs significantly reduce a person's risk of cardiovascular disease (MI and stroke), regardless of the serum cholesterol level.
6. Describe the mechanism underlying death in asthma and identify a way to prevent it.
7. Apply the "Three Question Approach" to interpretation of arterial blood gases.
8. State and understand the "common mechanism" for shock, regardless of the initial cause.

Target Audience: Nurses • Nurse Practitioners • Clinical Nurse Specialists
Respiratory Care Practitioners • Paramedics • Physician Assistants
Physical Therapists • Occupational Therapists




Complete Blood Counts with Differential

1 HOUR VIDEO

HURRY OFFER EXPIRES

August 15th, 2017

healthcare.pesi.com/CBC



Earn CE where you work! Bring this training & many others to your facility!

www.pesihealthcare.com/inhouse

56379

Understanding Pathophysiology

Its Direct Impact on Patient Care



SAVE WHEN YOU REGISTER EARLY!

Oak Lawn, IL

Tuesday, September 26, 2017

Naperville, IL

Wednesday, September 27, 2017

Arlington Heights, IL

Thursday, September 28, 2017

Register now! www.pesihealthcare.com/express/56379

Register now! www.pesihealthcare.com/express/56379

A Must-Attend Event for Every Health Care Professional

Understanding Pathophysiology

Its Direct Impact on Patient Care

Featuring

Angelica F. Dizon, MD, BSN, MBA-HCM, RN
Nationally Recognized Speaker

Improve your assessment skills and learn:

- Why are free radicals deadly in disease?
- What is the role of inflammation in atherosclerosis?
- Which drugs reverse heart failure?
- What is the common denominator for obstructive lung disease?

Oak Lawn, IL

Tuesday, September 26, 2017

Naperville, IL

Wednesday, September 27, 2017

Arlington Heights, IL

Thursday, September 28, 2017



A NON-PROFIT ORGANIZATION CONNECTING
KNOWLEDGE WITH NEED SINCE 1979



SAVE WHEN YOU REGISTER EARLY!

Register now! www.pesihealthcare.com/express/56379

Understanding Pathophysiology

Its Direct Impact on Patient Care

Few things in health care have as direct an impact on patient care as pathophysiology – the “whys” of what happens during disease and what we must do to treat it. If you know your pathophysiology, you can provide an accurate, speedy assessment and treatment for your patient.

Just about every potentially serious condition has a “trigger point.” Once this point is reached, a fairly uniform and predictable set of events occurs – mediators are released, causing worse events to take place. The result, left untreated, is multiple organ system dysfunction, multiple organ system failure, cardiac failure, then death. The seminar will apply this straightforward model to many important medical conditions. Understanding the “whys” behind these events enables us, as health care practitioners, to best assess the patient and intervene in a timely and effective manner. By the end of the day, you’ll have a thorough understanding of these principles and will know how and when to properly apply them.

SPEAKER

Angelica F. Dizon, MD, BSN, MBA-HCM, RN, is a doctor of medicine and registered nurse, with two decades of experience in clinical practice and academic teaching, predominantly in the hospital setting. Angelica has been well recognized for her past work in medical surgical roles, and has also gained experiences working in home health care and skilled nursing. More recently, she served as the director of clinical services in one of the leading home healthcare agencies in Maryland.

Her diverse experiences have provided her with a unique perspective on the importance of having an in-depth understanding of pathophysiology to facilitate the highest level of disease management and patient care. Angelica excels at putting complex topics into “plain English”. This skill, combined with her vast medical and nursing experiences, ensure a highly informative and enjoyable day – for an interdisciplinary audience.

Speaker Disclosures:

Financial: Angelica F. Dizon is a faculty member for Radians College. She receives a speaking honorarium from PESI, Inc.

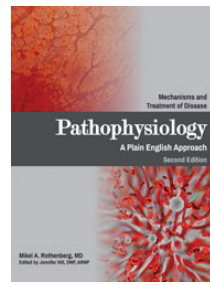
Non-financial: Angelica F. Dizon has no relevant non-financial relationships to disclose.



Have a seminar idea? A manuscript to publish?

The nation’s top speakers and authors contact PESI HealthCare first. If you are interested in becoming a speaker, or have a new topic idea, please contact Missy Cork at mcork@pesi.com or call (715) 855-6366.

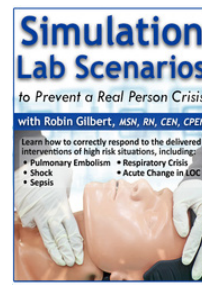
SAVE BY INCLUDING THESE PRODUCTS WITH SEMINAR REGISTRATION!



Pathophysiology: A Plain English Approach, Second Edition

By Mikel A. Rothenberg, MD and Dr. Jennifer Hill, DNP, ARNP

Pathophysiology - A Plain English Approach, Second Edition, is an easy to use book that has been UPDATED with the latest in laboratory medicine, biochemistry, and pharmacology. This comprehensive resource includes all the pathophysiology information you really need to know to better care for your patients. Detailed illustrations bring the concepts of pathophysiology elements to life. Main principles are outlined in boxes for easier visualization and understanding.



Simulation Lab Scenarios to Prevent a Real Patient Crisis

By Robin Gilbert, MSN, RN, CEN, CPEN

These simulation videos will allow you to think through the best action to take for the patient and review the rationale that follows. Learning through simulation scenarios provides immediate patient feedback, in a safe environment, which collectively builds confidence and provides an excellent bridge to real-life patient care situations.

Visit our Online Product Store: www.pesihealthcare.com/store

Seminar Schedule

7:30 Registration/Morning Coffee & Tea
8:00 Program begins
11:50-1:00 Lunch (*on your own*)
4:00 Program ends

10 – 15 minute mid-morning and mid-afternoon breaks
 For locations and maps, go to www.pesihealthcare.com, find your event, and click on the seminar title.

CANCELLATION POLICY: If you contact us before the event date, you can exchange for a DVD or CD/digital manual package on the subject (self-study continuing education credit may be available), a certificate to attend another seminar, or receive a tuition refund less a \$30 cancel fee. Substitutions are permitted at any time.

Live Seminar Continuing Education Credit Information

Credits listed below are for full attendance at the live event only. Certificates of Completion are distributed at the conclusion of the live seminar for those who register prior to the event date and attend the full day. A letter of attendance will be issued to participants who register at the event, arrive late, or leave early. For those who registered day of (walk-ins), and are in full attendance, a certificate of completion for full CE credit will be sent within 30 days following the event. For those in partial attendance (arrived late or left early), an adjusted certificate of completion reflecting partial credit will be issued within 30 days (if your board allows). Please see “live seminar schedule” for full attendance start and end times. NOTE: Boards do not allow credit for breaks or lunch.

If your profession is not listed, please contact your licensing board to determine your continuing education requirements and check for reciprocal approval. For other credit inquiries not specified below, or questions on home study credit availability, please contact cepesi@pesi.com or 800-844-8260 before the event.

Materials that are included in this course may include interventions and modalities that are beyond the authorized practice of mental health professionals. As a licensed professional, you are responsible for reviewing the scope of practice, including activities that are defined in law as beyond the boundaries of practice in accordance with and in compliance with your professions standards.

PESI, Inc. offers continuing education programs and products under the brand names PESI, PESI Healthcare, PESI Rehab and Psychotherapy Networker.

RESPIRATORY CARE PRACTITIONERS: This program has been approved for 6.33 contact hours Continuing Respiratory Care Education (CRCE) credit by the American Association for Respiratory Care, 9425 N. MacArthur Blvd. Suite 100 Irving TX 75063. Course #148182000. Full attendance is required to receive a certificate of successful completion. Please bring your AARC Member Number to the program.

NURSES/NURSE PRACTITIONER/CLINICAL NURSE SPECIALISTS: PESI, Inc. is accredited as a provider of continuing nursing education by the American Nurses Credentialing Center’s Commission on Accreditation.

Nurses in full attendance will earn 6.3 contact hours. PARTIAL CONTACT HOURS WILL BE AWARDED FOR PARTIAL ATTENDANCE.



NURSE PRACTITIONERS: This program offers 180 instructional minutes of pharmacology content which is designed to qualify for 3.0 contact hours toward your pharmacology requirement to receive credit. It is your responsibility to submit your certificate of successful completion and a copy of the seminar brochure to your licensing board.

OCCUPATIONAL THERAPISTS & OCCUPATIONAL THERAPY ASSISTANTS: PESI, Inc. is an AOTA Approved Provider of continuing education. Provider #: 3322. Full attendance at this course qualifies for 6.0 contact hours or .6 CEUs in the Category of Domain of OT and Occupational Therapy Process. Partial credit will be issued for partial attendance. The assignment of AOTA CEUs does not imply endorsement of specific course content, products, or clinical procedures by AOTA. Course Level: Intermediate.

PHYSICAL THERAPISTS & PHYSICAL THERAPIST ASSISTANTS: This activity consists of 6.25 clock hours of instruction that is applicable for physical therapists. CE requirements for physical therapists vary per state/jurisdiction. Please retain the certificate of completion that you receive and use as proof of completion when required.

ILLINOIS PHYSICAL THERAPISTS AND PHYSICAL THERAPIST ASSISTANTS: PESI, Inc. is a Registered Physical Therapy Continuing Education Sponsor through the State of Illinois Department of Financial and Professional Regulation, Division of Professional Regulation. License #: 216.000270. This course qualifies for 6.0 CE Credit Hours.

PHYSICIAN ASSISTANTS: This program has been reviewed and is approved for a maximum of 6.25 hours of clinical Category I CME credit by the American Academy of Physician Assistant Review Panel. Physician assistants should claim only those hours actually spent participating in the CME activity. This program was planned in accordance with AAPA’s CME Standards for Live Programs and for Commercial Support of Live Programs.

OTHER PROFESSIONS: This activity qualifies for 380 minutes of instructional content as required by many national, state and local licensing boards and professional organizations. Save your course outline and certificate of completion, and contact your own board or organization for specific requirements.

How to Register:

UNDERSTANDING PATHOPHYSIOLOGY

Questions? Visit www.pesihealthcare.com/faqs, or call 800-844-8260

ONLINE

www.pesihealthcare.com/express/56379

PHONE

800-844-8260

Please have credit card available

FAX

800-554-9775

MAIL

PESI HealthCare
 PO BOX 900
 Eau Claire, WI
 54702-0900

2 Check location: (make copy of locations)

OAK LAWN, IL
September 26, 2017
 Hilton Oak Lawn
 9333 S Cicero Ave • 60453
 (708) 425-7800

56379OLN

NAPERVILLE, IL
September 27, 2017
 Embassy Suites By Hilton Chicago Naperville
 1823 Abriter Ct • 60563
 (630) 799-5900

56379NPR

ARLINGTON HEIGHTS, IL
September 28, 2017
 DoubleTree Hotel Chicago Arlington Heights
 75 West Algonquin Rd. • 60005
 (847) 364-7600

56379ALH

Register now!

www.pesihealthcare.com/express/56379

FOR OFFICE USE ONLY
 Fed ID # 26-3896894 © 2017 PESI, Inc.

ADA needs:
 We would be happy to accommodate your ADA needs; please call at least two weeks prior to the seminar date.

Walk-ins are welcome but admission cannot be guaranteed. Call M-F 7:00-6:00 Central Time for space availability if registering within one week of seminar.

Tuition Options:
 \$30 Tuition: If you are interested in being our registration coordinator for the day, go to: www.pesihealthcare.com/coord for availability and job description, or call our Customer Service Dept. at 800-844-8260. Groups of 10 or more: Call 800-844-8260 for discounts.

Discounted Military Rate: PESI Inc. is proud to offer a \$20 tuition discount on live seminar tuition for veterans and active duty military personnel. **Advance registration by phone required.**
 Discounted Student Rate: As part of its mission to serve educational needs, PESI, Inc. offers a reduced rate of 50% off standard tuition for students. Enclose a current student schedule with registration form.
 Go to www.pesihealthcare.com/faqs or call 800-844-8260 for details.

Advance registration required.
 Cannot be combined with other discounts.

1 Please complete entire form (to notify you of seminar changes): please print; staple duplicate forms.

Mail Code:

See mail code box on address panel on reverse side

Name _____ Profession _____

Employer Name _____

Employer Address _____

Dept/Floor/Suite _____

City _____ County _____

State _____ Zip _____

Home/Cell Ph () _____

Dept. Ph () _____

E-mail address _____

For your convenience, confirmations are sent via email.

3 Check tuition:

Tuition with seminar manual

\$199.99 — choose one of the options below:

- per person for 2 or more preregistering together —OR—
- single registration postmarked 3 weeks prior to seminar date
- \$189.99** per person for 5 or more preregistering together
- \$219.99** standard

Add-On Products

Distributed at seminar—FREE SHIPPING!

- \$39.99*** *Pathophysiology: A Plain English Approach, Second Edition* book
- \$59.99*** *Simulation Lab Scenarios to Prevent a Real Patient Crisis* DVD

*Attendees add applicable state and local taxes except in AK, DE, MT, NH, OR

4 Indicate method of payment:

ALL REGISTRATIONS MUST BE PREPAID.
 Purchase orders welcome (attach copy).

Check enclosed payable to **PESI, Inc.**

MC VISA AE Discover Novus
 16 digits 13-16 digits 15 digits 16 digits

Card # _____

Card Exp. _____ V-Code #*: _____

Signature _____

(*MC/VISA/Discover: last 3-digit # on signature panel on back of card.)

(*American Express: 4-digit # above account # on face of card.)

CAN'T ATTEND THE SEMINAR?

Understanding Pathophysiology

— Seminar on DVD* (video) \$199.99 (RNV076955)

— Seminar on CD* (audio) \$169.99 (RNA076955)

— *Pathophysiology: A Plain English Approach, Second Edition* book* \$39.99 (PUB082660)

— *Simulation Lab Scenarios to Prevent a Real Patient Crisis* DVD* \$59.99 (RNV077295)

*Shipping is \$6.95 first item + \$2.00 each add'l item.

**Residents add applicable state and local taxes except in AK, DE, MT, NH, OR

Product total \$ _____

*Shipping _____

Subtotal _____

**Tax _____

TOTAL _____