

Outline

Behavioral Overview

**Etiology**  
Nature v. nurture  
Hormones, neuropsychology, behaviorism  
Gender differences  
“Eye of the beholder”

DSM-5® Updates

ADHD  
Oppositional defiant disorder  
Conduct disorder  
Autism spectrum disorders  
Bipolar disorder  
Childhood anxiety and depression

Medication Interventions

Psycho-stimulants  
Mood stabilizers  
Anti-depressants/anti-anxiety  
Atypical anti-psychotics  
Illegal/illicit substances and treatment effects

Tools for Helping Behavior Problems

Quick Techniques to Manage Anger

Time in!  
Restitution  
The peace table & empathy building  
Actor/observer  
Standing 8 count  
Art of compromise  
...And many more!

Quick Techniques to Manage Depression

Cut-n-paste  
The mirror effect  
Inside movie  
Types of journaling  
...And many more!

Quick Techniques to Manage Anxiety

Ceiling fan breathing  
Set the clock  
Progressive relaxation  
Top dog/underdog  
...And many more!

Quick Techniques to Manage Autism/Asperger’s

Facial expressions and social cues  
Building a broader structure  
The burrito  
Island of Solace  
...And many more!

Quick Techniques to Manage ADHD

Noise to the system  
Anticipation  
Therapeutic games  
...And many more!

Techniques to Help the Client’s World

Parents/Caregivers and Teachers/Schools

Intentional dialogue  
The listening jar  
Time out/quiet time  
Token economies/response cost (and avoiding pitfalls)  
The good behavior game

Manage Therapist Frustration

Limitations of Research and Potential Risks

Live Seminar and Schedule

**7:30** Registration/Morning Coffee & Tea  
**8:00** Program begins  
**11:50-1:00** Lunch (*on your own*)  
**4:00** Program ends

There will be two 15-min breaks (mid-morning & mid-afternoon).  
Actual lunch and break start times are at the discretion of the speaker.  
A more detailed schedule is available upon request.

Questions? Call Customer Service:  
**800-844-8260**

Objectives

1. Utilize effective, clinical techniques for the treatment of behavior disorders in children.
2. Develop specific behavioral interventions that address the developmental stage of the child and adolescent.
3. Appraise the efficacy of biologically-based interventions to address behavioral and emotional disorders in children.
4. Analyze clinical manifestations among anxiety disorders, ADHD, mood disorders, ODD and Conduct Disorder as it relates to diagnosis.
5. Develop clinical skills for establishing a therapeutic rapport to overcome treatment resistance in children and adolescents.
6. Analyze the diagnostic symptoms of behavioral/emotional disorders in children and adolescents and establish how this informs your choice of intervention strategies.

FREE Worksheets

Self-Regulation & Mindfulness



[www.pesi.com/selfregulationws](http://www.pesi.com/selfregulationws)

Bring any Training On-Site!

- Cost Effective for Groups
- Customizable
- Flexible

CE credits included!

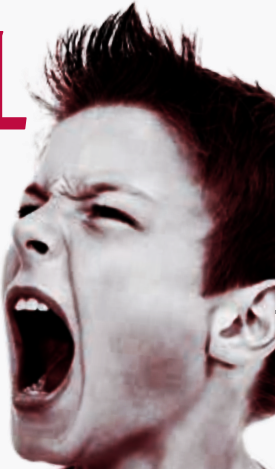
[www.pesi.com/inhouse](http://www.pesi.com/inhouse)

NON-PROFIT ORGANIZATION  
US POSTAGE PAID  
EAU CLAIRE, WI  
PERMIT NO 32729

PESI, Inc.  
P.O. Box 1000  
Eau Claire, WI 54702-1000  
A division of PESI, Inc.

OVER 75 QUICK, “ON-THE-SPOT” TECHNIQUES FOR CHILDREN AND ADOLESCENTS WITH EMOTIONAL AND BEHAVIORAL PROBLEMS

Over 2/3 of seminar contains teachable and proven behavior-changing techniques



MONTGOMERY, AL

Wednesday  
February 19, 2020

BIRMINGHAM, AL

Thursday  
February 20, 2020

HUNTSVILLE, AL

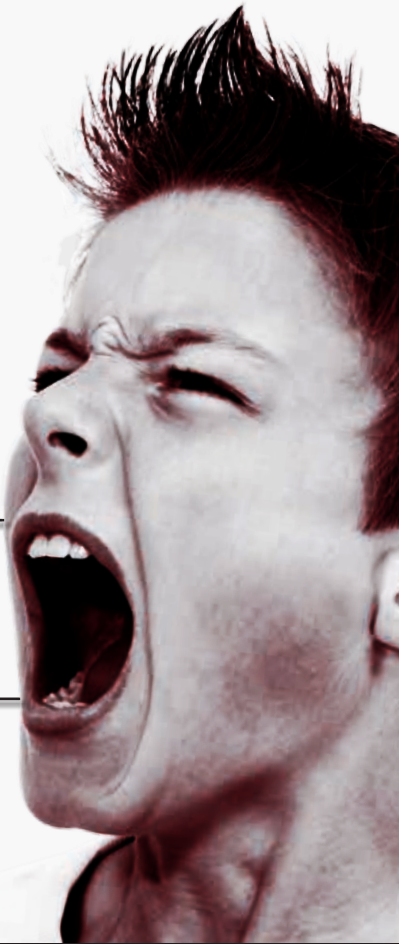
Friday  
February 21, 2020

OVER 75 QUICK, “ON-THE-SPOT” TECHNIQUES FOR CHILDREN AND ADOLESCENTS WITH EMOTIONAL AND BEHAVIORAL PROBLEMS

Over 2/3 of seminar contains teachable and proven behavior-changing techniques

Featuring

Steven T. Olivas, Ph.D., HSP  
Nationally-renowned speaker,  
behavior consultant & author



MONTGOMERY, AL

Wednesday  
February 19, 2020

BIRMINGHAM, AL

Thursday  
February 20, 2020

HUNTSVILLE, AL

Friday  
February 21, 2020



A Non-Profit Organization Connecting Knowledge with Need Since 1979

REGISTER NOW: [pesi.com/express/76838](http://pesi.com/express/76838)

REGISTER NOW: [pesi.com/express/76838](http://pesi.com/express/76838)



Become  
ADHD-CCSP  
Certified!  
Details Inside



OVER 75 QUICK, “ON-THE-SPOT” TECHNIQUES FOR CHILDREN AND ADOLESCENTS WITH EMOTIONAL AND BEHAVIORAL PROBLEMS

Leaving nothing to the abstract, “75 Quick, ‘On-the-Spot’ Techniques for Children and Adolescents with Emotional and Behavioral Problems” will guide you through focused, clear and successful methods for treating children. Every professional who seeks to fill their toolbox with tested methods will leave this seminar with a wealth of fresh ideas and rejuvenated spirits.

If you do not have a lot of experience working with children and teens, you will leave with a defined strategy for success. If you are a seasoned professional, you will learn new tricks and techniques to re-energize and revitalize your practice!

With nearly 25 years of clinical experience and a background in improvisational comedy, Dr. Steve is a strong proponent of “Edu-tainment.” Namely, he uses charm, wit and humor to enhance your seminar experience, thus improving the retention and utilization of the specific skills covered. We change the world when we touch a child’s life!

**Speaker**  
**Steven T. Olivas, Ph.D., HSP**, nationally renowned speaker, author and behavior consultant, is a licensed psychologist in private practice in Middle Tennessee. He began his practice career in 1991 when ADHD was exploding onto the scene and has enjoyed working with the energy and spontaneous creativity of children ever since. Throughout his career, he has taught courses at nine colleges and universities, been a national public speaker, a regular columnist for a local newspaper and co-host of a popular radio show. He is the author of the book *When Good Kids Go Bad: Effective Solutions for Problem Behaviors* and the acclaimed book *Bad Kids...or Bad Behavior?*

For nearly 25 years, he has been helping clinicians, school systems and parents around the country understand and manage the kids and teens most likely to act out in impulsive and aggressive manners.

Speaker Disclosures:  
Financial: Steven T. Olivas is an author for Premier Publishing & Media and receives royalty payments. He is an author for Author’s Corner Publishing and receives royalty payments. He is a speaker who receives an honorarium for PESI, Inc.  
Non-financial: Steven T. Olivas has no relevant non-financial relationship to disclose.

BECOME CERTIFIED!

Visit [adhdcert.com](http://adhdcert.com) for the full certification requirements.

FREE TUITION

For Veterans & Active Military Personnel

PESI, Inc. is proud to offer this seminar (at these locations only) free of charge (on live seminar tuition) for veterans and active duty military personnel. *Limited seats available; advance online registration required.*

**Hassle-Free Cancellation Policy:** If you contact us before the event date, you can exchange for a self-study package on the subject (CE credits may be available), a certificate to attend another seminar, or receive a tuition refund less a \$30 cancel fee. Substitutions are permitted at any time.

**Seminar on DVD or Digital Format:** You can purchase a self-study package on the subject and you and your colleagues can receive CE hours for a nominal fee. To determine if homestudy credits are available for your profession go to [www.pesi.com](http://www.pesi.com) or call 800-844-8260. Check with your licensing board to verify acceptance of self-study credits for license renewal. If purchasing the digital format, you will receive an emailed order confirmation which contains your login instructions to access the recorded seminar, electronic handouts and online post-test. Order today by using the order form on this brochure or by calling 800-844-8260.

**Have a seminar idea? A manuscript to publish?** The nation’s top speakers and authors contact PESI first. If you are interested in becoming a speaker or have a new topic idea, please contact Marlie Sullivan at [msullivan@pesi.com](mailto:msullivan@pesi.com) or call 715-855-8226.

SAVE BY INCLUDING THESE PRODUCTS WITH SEMINAR REGISTRATION!

**When Good Kids Go Bad: Effective Solutions for Problem Behaviors**  
By Steven T. Olivas, Ph.D., HSP

Informative, artful, and fun, *When Good Kids Go Bad* takes readers inside the minds of our troubled kids and teens. Whether they are mildly irritating or well out of control, readers will leave armed with a broad range of proven techniques to curb negative behaviors and encourage positive ones. Therapists, parents, teachers, and all professionals interacting with these kids will have their questions answered and be given clear instructions on how to begin the road to behavioral and emotional change.

**Letting Go of Anger Card Deck: 54 Cards to Help Teens Tame Frustration**  
By Jeffrey Bernstein

- Simple skills to successfully manage anger
- Tools to calm in emotionally tense moments
- Strategies to overcome anxiety

- Using anger in a healthy way
- Steps to create positive changes

**Target Audience**  
Counselors • Social Workers • Psychologists • Marriage and Family Therapists • Speech-Language Pathologists  
Teachers • School Guidance Counselors • Case Managers • Nurses • School Administrators  
Educational Paraprofessionals • Occupational Therapists & Occupational Therapy Assistants  
Other Helping Professionals who Work with Children

**Live Seminar Continuing Education Credit Information**

*Credits listed below are for full attendance at the live event only. After attendance has been verified, pre-registered attendees will receive an email from PESI Customer Service with the subject line, "Evaluation and Certificate" within one week. This email will contain a link to complete the seminar evaluation and allow attendees to print, email or download a certificate of completion if in full attendance. For those in partial attendance (arrived late or left early), a letter of attendance is available through that link and an adjusted certificate of completion reflecting partial credit will be issued within 30 days (if your board allows). Please see "LIVE SEMINAR SCHEDULE" on this brochure for full attendance start and end times. NOTE: Boards do not allow credit for breaks or lunch. If your profession is not listed, please contact your licensing board to determine your continuing education requirements and check for reciprocal approval. For other credit inquiries not specified below, or questions on home study credit availability, please contact [cepesi@pesi.com](mailto:cepesi@pesi.com) or 800-844-8260 before the event. Materials that are included in this course may include interventions and modalities that are beyond the authorized practice of mental health professionals. As a licensed professional, you are responsible for reviewing the scope of practice, including activities that are defined in law as beyond the boundaries of practice in accordance with and in compliance with your profession's standards. PESI, Inc. offers continuing education programs and products under the brand names PESI, PESI Healthcare, PESI Rehab and Psychotherapy Networker.*

**COUNSELORS:** This intermediate activity consists of 6.25 clock hours of continuing education instruction. Credit requirements and approvals vary per state board regulations. Please save the course outline, the certificate of completion you receive from the activity and contact your state board or organization to determine specific filing requirements.

**ALABAMA COUNSELORS:** This intermediate activity consists of 6.25 clock hours of continuing education instruction. Credit requirements and approvals vary per state board regulations. Please contact the Alabama Board of Examiners in Counseling prior to the activity to determine requirements. A certificate of attendance will be awarded at the end of the program to counselors who complete the program evaluation.

**TENNESSEE COUNSELORS:** This intermediate activity consists of 6.25 clock hours of continuing education instruction. Credit requirements and approvals vary per state board regulations. Please contact your licensing board to determine if they accept programs or providers approved by other national or state licensing boards. A certificate of attendance will be awarded at the end of the program to participants who are in full attendance and who complete the program evaluation.

**EDUCATORS/TEACHERS:** This course is designed to qualify toward your professional development requirement. The program is 6.25 clock hours in length.

**MARRIAGE & FAMILY THERAPISTS:** This activity consists of 380 minutes of continuing education instruction. Credit requirements and approvals vary per state board regulations. You should save this course outline, the certificate of completion you receive from the activity and contact your state board or organization to determine specific filing requirements.

**NURSES, NURSE PRACTITIONERS, AND CLINICAL NURSE SPECIALISTS:** PESI, Inc. is accredited as a provider of continuing nursing education by the American Nurses Credentialing Center's Commission on Accreditation.

Nurses in full attendance will earn 6.3 contact hours. Partial contact hours will be awarded for partial attendance.

**OCCUPATIONAL THERAPISTS & OCCUPATIONAL THERAPY ASSISTANTS:** PESI, Inc. is an AOTA Approved Provider of continuing education. Provider #: 3322. Full attendance at this course qualifies for 6.0 contact hours or .6 CEUs in the Category of Domain of OT and Occupational Therapy Process. Partial credit will be issued for partial attendance. The assignment of AOTA CEUs does not imply endorsement of specific course content, products, or clinical procedures by AOTA. Course Level: Intermediate.

**APPROVED PROVIDER**  
PESI, Inc. is approved by the Continuing Education Board of the American Speech-Language-Hearing Association (ASHA) to provide continuing education activities in speech-language pathology and audiology. See course information for number of ASHA CEUs, instructional level and content area. ASHA CE Provider approval does not imply endorsement of course content, specific products or clinical procedures.

**PSYCHOLOGISTS & PSYCHIATRISTS:**

**PSYCHIATRISTS:** PESI, Inc. is accredited by the Accreditation Council for Continuing Medical Education to provide continuing medical education for physicians. PESI, Inc. designates this live activity for a maximum of 6.0 AMA PRA Category 1 Credit(s). Physicians should only claim credit commensurate with the extent of their participation in the activity.

**PSYCHOLOGISTS:** The following state psychologist boards recognize activities sponsored by PESI, Inc. as an approved ACCME provider: Alaska, Arkansas, California, Colorado, Georgia, Illinois, Indiana, Kentucky, Maine, Maryland, Missouri, Nebraska, Nevada, New Hampshire, New Jersey, New Mexico, Oklahoma, Pennsylvania, South Carolina and Wisconsin. This activity consists of 6.0 clock hours of continuing education instruction. Certificates of attendance will be issued for you to submit to your state licensing board to recognize for continuing education credit.

**TENNESSEE PSYCHOLOGISTS:** This course is designed to meet Type II CE of the Tennessee Board of Examiners of Psychology. The Board accepts approvals by any recognized national credentialing body. Please retain all documents to provide to your board should this be requested of you. This activity consists of 6.25 clock hours of continuing education instruction.

**SPEECH-LANGUAGE PATHOLOGISTS:** This course is offered for .6 ASHA CEUs (Intermediate level, Professional area).

**SOCIAL WORKERS:** PESI, Inc., #1062, is approved to offer social work continuing education by the Association of Social Work Boards (ASWB) Approved Continuing Education (ACE) program. Organizations, not individual courses, are approved as ACE providers. State and provincial regulatory boards have the final authority to determine whether an individual course may be accepted for continuing education credit. PESI, Inc. maintains responsibility for this course. ACE provider approval period: January 27, 2017 - January 27, 2020. Social Workers completing this course receive 6.25 Clinical Practice continuing education credits. Course Level: Intermediate. Full attendance is required; no partial credits will be offered for partial attendance. A certificate of attendance will be awarded at the end of the program to social workers who complete the program evaluation.

**OTHER PROFESSIONS:** This activity qualifies for 380 minutes of instructional content as required by many national, state and local licensing boards and professional organizations. Save your course outline and certificate of completion, and contact your own board or organization for specific requirements.

**SCAN HERE**

FOR A SPECIAL OFFER ON BOOKS & CARD DECKS

REGISTRATION FORM

OVER 75 QUICK, “ON-THE-SPOT” TECHNIQUES FOR CHILDREN AND ADOLESCENTS WITH EMOTIONAL AND BEHAVIORAL PROBLEMS

**SAVE TIME! Express Register Online: [pesi.com/express/76838](http://pesi.com/express/76838)**

1

Please complete entire form if sending by mail

please print legibly

MAIL CODE: \_\_\_\_\_ See mail code box on reverse side above your name & address

\*Email address \_\_\_\_\_ \*Email required to receive registration confirmation, CE certificate, and/or digital product.

Name \_\_\_\_\_ Profession \_\_\_\_\_

Billing Address \_\_\_\_\_ ☐ Home ☐ Work

Company Name (if work address): \_\_\_\_\_

City \_\_\_\_\_ County \_\_\_\_\_ State \_\_\_\_\_ Zip \_\_\_\_\_

\*Cell Ph ( \_\_\_\_\_ ) \_\_\_\_\_ Work Ph ( \_\_\_\_\_ ) \_\_\_\_\_ \*Required for event updates

2

Select Location

(make copy for your records)

☐ **MONTGOMERY, AL • February 19, 2020** (76838MON)  
Hilton Garden Inn Montgomery East  
1600 Interstate Park Dr • 36109 • (334) 272-2225

☐ **BIRMINGHAM, AL • February 20, 2020** (76838BIR)  
Hilton Birmingham at UAB  
808 S 20th St • 35205 • (205) 933-9000

☐ **HUNTSVILLE, AL • February 21, 2020** (76838HUN)  
Four Points Sheraton Huntsville Airport  
1000 Glenn Hearn Blvd SW • 35824 • (256) 772-9661

3

Select Tuition

TUITION including seminar manual

**\$219.99** – choose one of the options below:  
☐ per person for 2 or more preregistering together —OR—  
☐ single registration postmarked 3 weeks prior to seminar date

☐ **\$249.99** standard

**ADD-ON PRODUCTS — Save on Shipping! —Products Distributed at Seminar**

☐ **\$19.95\*** *When Good Kids Go Bad* book (PUB044310)

☐ **\$16.99\*** *Letting Go of Anger Card Deck* (PUB085305)

\*Attendees add applicable state and local taxes except in AK, DE, MT, NH, OR

4

Select Payment Method

All registrations must be prepaid.

☐ Check enclosed payable to **PESI, Inc.**

☐ Purchase order enclosed (Fed ID # 26-3896894)

☐ MC 16 digits ☐ VISA 13-16 digits ☐ AE 15 digits ☐ Discover Novus 16 digits

Card # \_\_\_\_\_

Card Exp. \_\_\_\_\_ CVV#: \_\_\_\_\_

Signature \_\_\_\_\_

(\*MC/VISA/Discover: last 3-digit # on signature panel on back of card.) (\*American Express: 4-digit # above account # on face of card.)

**ADA NEEDS**  
We would be happy to accommodate your ADA needs; please email [info@pesi.com](mailto:info@pesi.com) or call 1-800-844-8260 at least two weeks prior to the seminar date.

**SAME DAY REGISTRATION**  
Walk-ins are welcome but admission cannot be guaranteed. Contact us for space availability if registering within one week of seminar.

**TUITION OPTIONS**  
*Advance registration required. Cannot be combined with other discounts.*

- FREE Military Tuition:** PESI Inc. is proud to offer this seminar free of charge on live seminar tuition for veterans and active duty military personnel. *Limited seats available; advance online registration required.*
- \$30 Tuition:** If you are interested in being our registration coordinator for the day, go to: [www.pesi.com/coord](http://www.pesi.com/coord) for availability and job description, first come, first serve.
- Discounted Student Rate:** As part of its mission to serve educational needs, PESI, Inc. offers a reduced rate of 50% off standard tuition for students. Enclose a current student schedule with registration form. Go to [www.pesi.com/students](http://www.pesi.com/students) for details.

**QUESTIONS**  
Visit [pesi.com/faq](http://pesi.com/faq) or email us at [info@pesi.com](mailto:info@pesi.com)

**OTHER WAYS TO REGISTER**  
Fax: 800-554-9775  
Mail: PESI, Inc.  
PO Box 1000  
Eau Claire, WI 54702-1000  
Phone: 800-844-8260  
Online: [pesi.com/express/76838](http://pesi.com/express/76838)

**CAN'T ATTEND THE SEMINAR?**

**Over 75 Quick, “On-the-Spot” Techniques for Children and Adolescents with Emotional and Behavioral Problems**

Online Digital Seminar\*

\$219.99 (POS041280) (Email required)

Seminar on DVD\*\*

\$219.99 (RNV041280)

Product total \_\_\_\_\_

\*Shipping - \$6.95 (DVD only) \_\_\_\_\_

Subtotal \_\_\_\_\_

\*\*Tax \_\_\_\_\_

TOTAL \_\_\_\_\_

\*For digital seminars, add applicable tax in AL, AZ, AR, CO, CT, DC, HI, IN, IA, KY, LA, ME, MN, MS, NE, NJ, NM, NY, NC, OH, PA, SD, TN, TX, UT, VT, WA, WI, WY.

\*\*For DVD orders, add applicable tax except in AK, DE, MT, NH, OR

CE hours and approvals on products may differ from live CE approvals. Additional CE participant prices may vary.